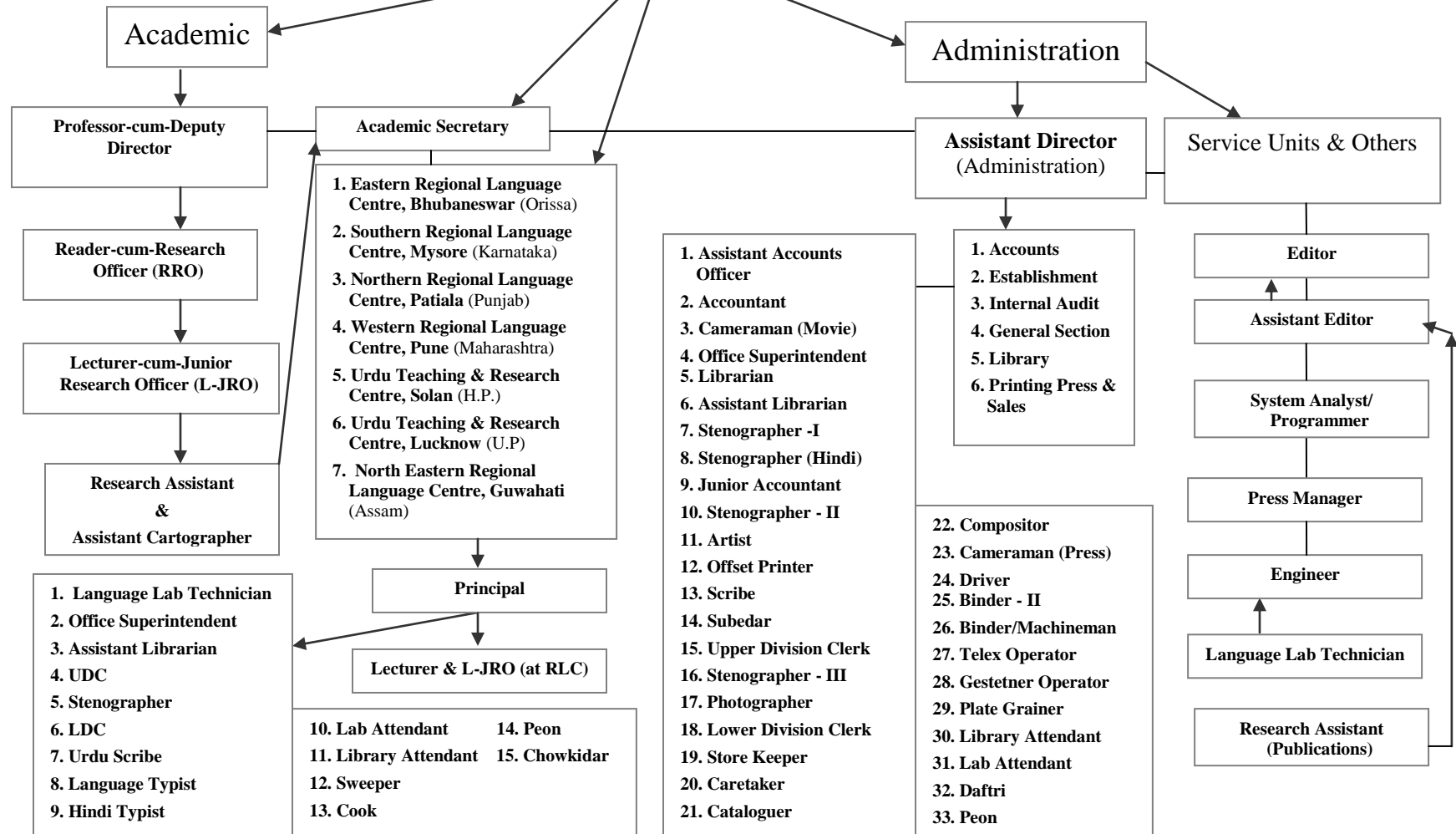


**Central Institute of Indian Languages
Ministry of Education
Department of Higher Education**

Staff Structure of the Institute

Director



Academic

Professor-cum-Deputy Director

Reader-cum-Research Officer (RRO)

Lecturer-cum-Junior Research Officer (L-JRO)

Research Assistant & Assistant Cartographer

- 1. Language Lab Technician
- 2. Office Superintendent
- 3. Assistant Librarian
- 4. UDC
- 5. Stenographer
- 6. LDC
- 7. Urdu Scribe
- 8. Language Typist
- 9. Hindi Typist

Academic Secretary

- 1. Eastern Regional Language Centre, Bhubaneswar (Orissa)
- 2. Southern Regional Language Centre, Mysore (Karnataka)
- 3. Northern Regional Language Centre, Patiala (Punjab)
- 4. Western Regional Language Centre, Pune (Maharashtra)
- 5. Urdu Teaching & Research Centre, Solan (H.P.)
- 6. Urdu Teaching & Research Centre, Lucknow (U.P.)
- 7. North Eastern Regional Language Centre, Guwahati (Assam)

Principal

Lecturer & L-JRO (at RLC)

- 10. Lab Attendant
- 11. Library Attendant
- 12. Sweeper
- 13. Cook
- 14. Peon
- 15. Chowkidar

Administration

Assistant Director (Administration)

- 1. Assistant Accounts Officer
- 2. Accountant
- 3. Cameraman (Movie)
- 4. Office Superintendent
- 5. Librarian
- 6. Assistant Librarian
- 7. Stenographer -I
- 8. Stenographer (Hindi)
- 9. Junior Accountant
- 10. Stenographer - II
- 11. Artist
- 12. Offset Printer
- 13. Scribe
- 14. Subedar
- 15. Upper Division Clerk
- 16. Stenographer - III
- 17. Photographer
- 18. Lower Division Clerk
- 19. Store Keeper
- 20. Caretaker
- 21. Cataloguer

- 1. Accounts
- 2. Establishment
- 3. Internal Audit
- 4. General Section
- 5. Library
- 6. Printing Press & Sales

- 22. Composer
- 23. Cameraman (Press)
- 24. Driver
- 25. Binder - II
- 26. Binder/Machineman
- 27. Telex Operator
- 28. Gestetner Operator
- 29. Plate Grainer
- 30. Library Attendant
- 31. Lab Attendant
- 32. Daftri
- 33. Peon

Service Units & Others

Editor

Assistant Editor

System Analyst/Programmer

Press Manager

Engineer

Language Lab Technician

Research Assistant (Publications)